

I've included 4 patterns for you to try. Make sure to print "actual" NOT "fit to page" so it will finish as a 2 1/2" square.

Materials:

Scrap fabrics

3/4" circle magnets (JoAnn's or Michaels)

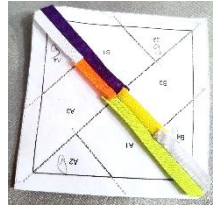
Batting

Printer paper or foundation paper piecing paper

Add-an-eighth ruler

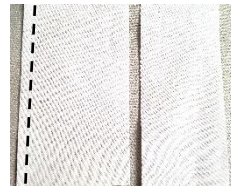
Elmer's glue (liquid)

Thin material like small picture or template material (2" x 6" will work great for foundation paper piecing)



TIP: Use 1.4 stitch length to make sure stitches don't show since seams will be ironed open. It's easier to remove the paper.

1. Sew with your favorite method of foundation paper piecing.
2. Batting: Lightly glue batting to the back of the block
3. Backing: (A) Cut (1) piece 2 1/2" wide x 3 1/2", press long edge under 1/4", press and topstitch
(B) Cut (1) piece 1 3/4" wide x 3 1/2"
Lay A over B overlapping 1/2" - 3/4" (see picture)



4. Sew 1/4" around all 4 edges with RST. Trim corners, turn and press.



TIP: Make sure overlapped backing is away from the center so you can insert the magnet.

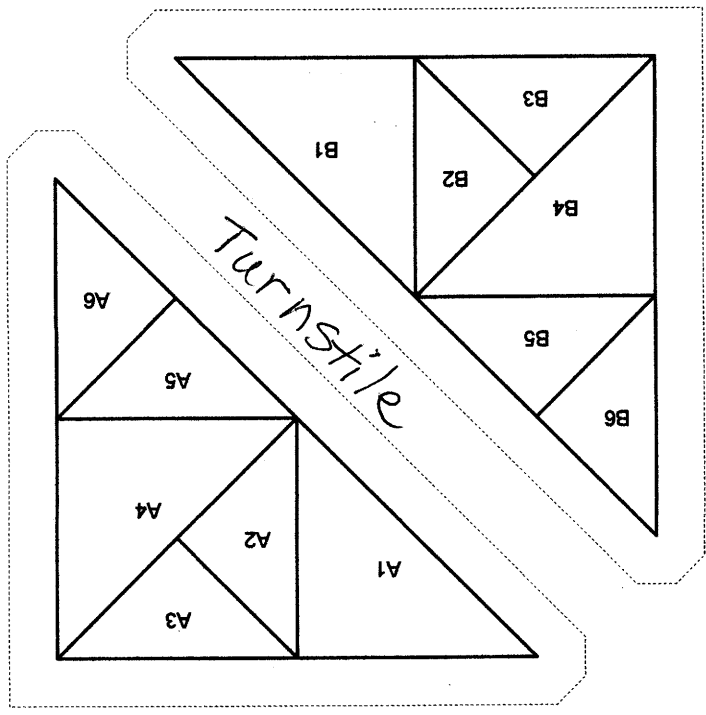
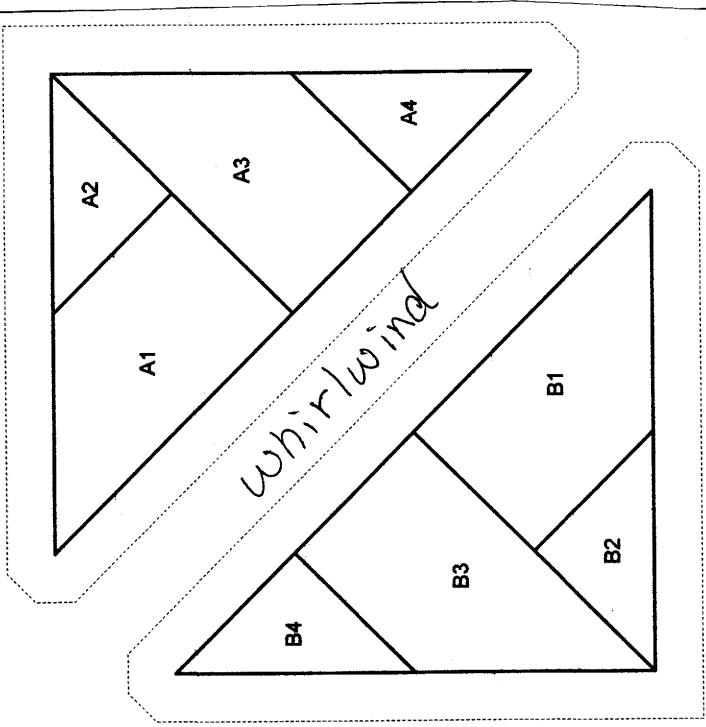
5. Press magnet inside the center. **TIP:** the sticky back should be stuck to the batting. Make sure it is not directly under the top stitched edge. This needs to be glued down.



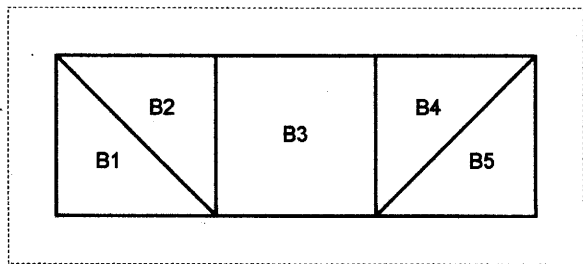
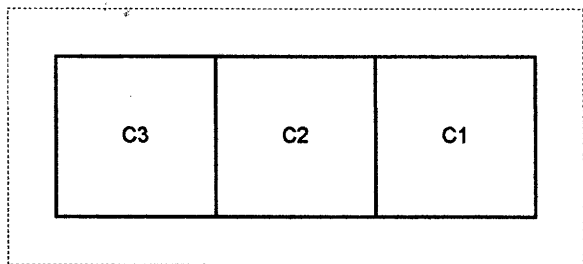
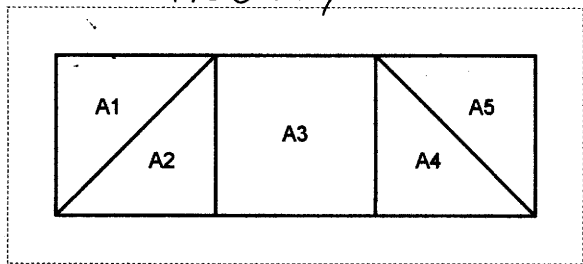
6. Squeeze Elmer's glue onto the inside edge of (A). **NOTE:** Iron the edge with a hot iron to activate the glue.
7. Enjoy!







Shoofly



new Album

